

COLLEGE PROFILE 2025-2026



About Episcopal

Founded in 1966, Episcopal School of Jacksonville is a coeducational college-preparatory school, enrolling more than 1,500 students from ages 1 to Grade 12 across three campuses. An Episcopal education instills a love of lifelong learning and respect for the dignity of every human being.

Episcopal's Mission

Our mission is to provide a superior college-preparatory education in an environment marked by high expectation, Christian nurture, and social diversity. Through a balanced program of academics, arts, and athletics, Episcopal's faculty seeks to instill in each student intellectual growth, character development, responsible leadership, and a commitment to community service.

An Episcopal School of Jacksonville Graduate:

- /// *Seeks Understanding* while valuing curiosity, collaboration, and inclusion; engaging in the ever-evolving process of learning.
- /// *Develops a Sense of Self* through experience and reflection; possessing confidence earned through challenge, tempered with humility.
- /// *Lives with Honor and Purpose* choosing to lead and do good; serving others as a part of a larger community.
- /// *Pursues a Life of Faith* by seeking a relationship with God and others; respecting the dignity of every human being.

College Counseling Mission /// To build relationships with students and their families over the four years of Upper School and to help each student shape a strong and authentic profile, in and out of the classroom, enabling them to achieve success in the college process.

Athletics /// College Counselors work hand in hand with coaches and advisors to identify university programs that are a good fit from competition, academic, and cultural standpoints. Each year, **approximately 21% of our senior athletes go on to compete at the collegiate level** across many sports at a variety of colleges.

21%

ESJ seniors go on to compete in collegiate level athletics

Fine Arts /// The College Counseling and Fine Arts Departments work in partnership to offer collective support and guidance to student-artists who are interested in continuing their craft in college. Each year, **approximately 25% of our seniors continue their art education in college.**

25%

ESJ seniors continue their art education in college

Commitment to Service /// Community service and social responsibility are emphasized at Episcopal. Students are required to contribute at least 100 hours of service by graduation. During their time in Upper School graduating seniors collectively serve approximately 25,000 hours.

Honor System /// The Honor System is an integral part of Episcopal, establishing a culture in which each person in the community is valued and respected. Students are expected to act with integrity, be trustworthy, reliable, honest, and embody kindness, awareness, inclusion, and respect for all. These expectations extend to all aspects of the college application process.

About Episcopal College Counseling

Rooted in care and respect for each student's unique interests and goals, our College Counseling program empowers students to develop authentic profiles—both in and beyond the classroom. Our four experienced college counselors partner closely with families to guide students through self-discovery, thoughtful research and decision-making, and a data-informed, values-aligned college search. Whether they're aiming for a highly selective university or exploring a range of schools that match their interests, our counselors help navigate the journey with confidence and clarity.

Our goal is to prepare students to take ownership of their future – equipped with the tools, insights, and self-knowledge they need to thrive and contribute in college and beyond.

Through a highly personalized approach, our College Counseling team provides students and families with programming and support at each grade level, including:

- /// Academic course planning and strategic advising for purposeful involvement throughout Upper School
- /// Frequent interactions to get to know each student, through on-campus engagement and participation
- /// Guest speakers, College Knowledge information sessions, and parent information events
- /// College visit recommendations and planning
- /// Individualized and balanced college list development, with a focus on academic, personal, social, and financial fit
- /// College admissions representative visits on campus
- /// Essay brainstorming, coaching, and editing
- /// Personalized timeline for standardized testing and preparation
- /// Review and feedback for all college application components
- /// Strategies and support for final college selection

Academic Information

Grading and Weighting ∞ Only courses taken at Episcopal during Upper School are listed on the Episcopal transcript and used to calculate the cumulative weighted GPA. A weighting of 0.25 is given to college preparatory academic courses, 0.50 to honors, and 1.0 to AP courses.

Academic Honor Societies

- ∞ Cum Laude Society
- ∞ National Honor Society
- ∞ National Junior Honor Society
- ∞ Discipline specific societies in Mathematics, World Language, and Fine Arts

Graduation Requirements:

24 credits, including successful completion of:

4 English 3 History 3 World Language 2 Fine Arts 1 Physical Education
 4 Math 3 Science 1 Freshman Seminar 1 Theology

Grading Scale and GPA points

| | | | | | | | | | | | |
|-----------|--------|------|-----------|-------|------|-----------|-------|------|-----------|-------|------|
| A+ | 100-97 | 4.34 | B+ | 89-87 | 3.34 | C+ | 79-77 | 2.34 | D+ | 69-67 | 1.34 |
| A | 96-93 | 4.00 | B | 86-83 | 3.00 | C | 76-73 | 2.00 | D | 66-63 | 1.00 |
| A- | 92-90 | 3.67 | B- | 82-80 | 2.67 | C- | 72-70 | 1.67 | D- | 62-60 | 0.67 |
| | | | | | | | | | F | 59-0 | 0.00 |

Curriculum

Episcopal's challenging curriculum is thoughtfully designed to prepare students to be successful at some of the most selective universities in the country. Learner-centered instruction is at the heart of our curriculum, taught by expert faculty. All courses are taught at the college preparatory level and a typical schedule consists of six courses per semester. A small percentage of students take their first AP course in 10th grade, while most students take their first AP course in 11th grade.



Distinctive Characteristics

The Harkness Method ∞ Discussion-based teaching used in all Upper School English and history courses, which places a premium on the depth of contribution over frequency and empowers each student to find their voice and value others' thoughts, which in turn increases a sense of autonomy and the ability to verbally articulate insights, opinions, and questions.

Freshman Seminar ∞ Teaches and employs skills required to be successful students and responsible community members, including public speaking, technology, study skills, and healthy living.

Honors Science Seminar ∞ Students undertake original scientific research under the guidance of Episcopal science teachers and qualified scientists, to design a controlled experiment that is conducted in a school laboratory or in a research institution. All projects must adhere to the rules of the International Science and Engineering Fair.

Advanced Honors Mathematics ∞ Available only to students who have completed AP Calculus BC. Its purpose is to reinforce formal logic and proof-writing through new and renewed content, provide exposure to and background in advanced topics not commonly encountered until college, and teach students how to produce mathematical models of real and relevant situations.

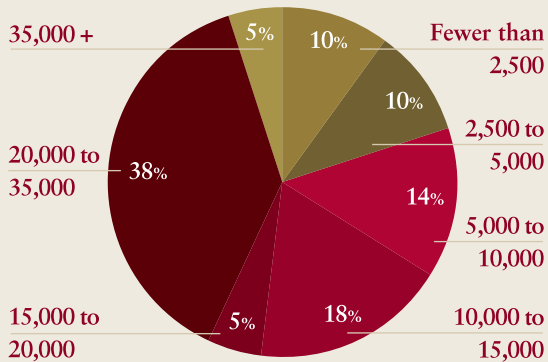
Senior Capstone ∞ All students design and complete a project of self-reflection about who they are and how they hope to continue growing.

Advanced Placement & Honors Courses

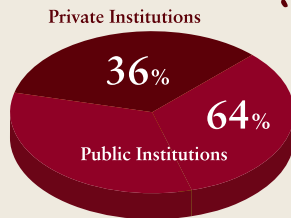
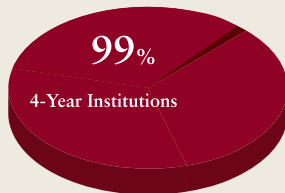
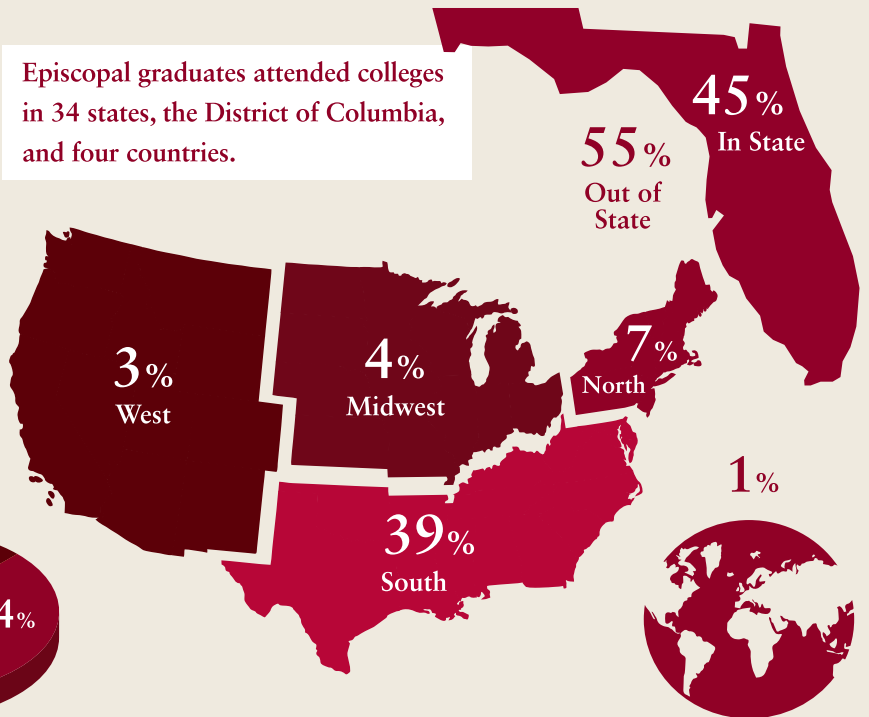
Episcopal offers 40 Honors and 30 Advanced Placement courses. The full Upper School Course Catalogue is available at esj.org/coursecatalogue-us.

College Matriculation Information 2022-2025 (590 Students)

Undergraduate Enrollment Size of Colleges Attended



Episcopal graduates attended colleges in 34 states, the District of Columbia, and four countries.



Class of 2026 (6 semester GPA)

| Quintile | Mean GPA 154 students |
|------------|--------------------------|
| 1 | 4.68 |
| 2 | 4.28 |
| 3 | 3.94 |
| 4 | 3.57 |
| 5 | 3.11 |
| Overall | 3.92 |
| Middle 50% | 3.50-4.42 |

Classes of 2022-2025

| Quintile | Mean GPA 590 students |
|------------|--------------------------|
| 1 | 4.68 |
| 2 | 4.30 |
| 3 | 4.03 |
| 4 | 3.76 |
| 5 | 3.22 |
| Overall | 4.00 |
| Middle 50% | 3.70-4.38 |

Classes of 2022-2025

| Quintile | Mean SAT 86% testing | Mean ACT 68% testing |
|------------|-------------------------|-------------------------|
| 1 | 1444 | 33 |
| 2 | 1332 | 30 |
| 3 | 1244 | 27 |
| 4 | 1155 | 24 |
| 5 | 1031 | 20 |
| Overall | 1241 | 27 |
| Middle 50% | 1130-1360 | 23-31 |

College Counseling

Julie Carter † Director
carterj@esj.org

May Ibasco † Associate Director
ibascom@esj.org

Tyler Bond † Assistant Director
bondt@esj.org

Maria Carter † Assistant Director
carterm@esj.org

Traci Cory † Assistant
coryt@esj.org

Administration

The Rev. Adam Greene
Head of School

Natalie Herford
Head of Upper School

CEEB Code: 100761

Accreditation:

Florida Council of
Independent Schools (FCIS)
Southern Association of
Independent Schools (SAIS)



EPISCOPAL
SCHOOL of JACKSONVILLE

4455 Atlantic Blvd
Jacksonville, FL 32207
904-396-5751
www.esj.org

2022-2025 College Matriculations

/// Number Enrolled

| | | |
|--|---|---|
| 1 /// American University | 3 /// Georgia Institute of Technology | 1 /// Trinity College Dublin |
| 1 /// Anderson University | 8 /// Georgia Southern University | 1 /// Trinity University |
| 2 /// Appalachian State University | 1 /// Georgia Southwestern State University | 2 /// Tulane University of Louisiana |
| 1 /// Arizona State University (Tempe) | 5 /// Hampden-Sydney College | 1 /// United States Merchant Marine Academy |
| 21 /// Auburn University | 1 /// Harding University | 3 /// United States Naval Academy |
| 1 /// Ball State University | 1 /// Harvard University | 2 /// University of Arizona |
| 1 /// Barry University | 1 /// Haverford College | 2 /// University of British Columbia |
| 5 /// Belmont University | 2 /// High Point University | 2 /// University of California |
| 3 /// Boston College | 9 /// Jacksonville University | 6 /// University of Central Florida |
| 2 /// Boston University | 1 /// Johnson & Wales University (Providence) | 3 /// University of Colorado Boulder |
| 1 /// Bridgewater State University | 2 /// Liberty University | 2 /// University of Denver |
| 3 /// Brown University | 2 /// Louisiana State University | 45 /// University of Florida |
| 1 /// Bucknell University | 1 /// Macalester College | 6 /// University of Georgia |
| 1 /// Butler University | 1 /// Marion Military Institute | 1 /// University of Illinois at Urbana-Champaign |
| 1 /// Catholic University of America | 4 /// Mercer University | 1 /// University of Kansas |
| 1 /// Centre College | 3 /// Methodist University | 1 /// University of Louisville |
| 1 /// Chapman University | 2 /// Michigan State University | 1 /// University of Maryland |
| 1 /// Citadel Military College of South Carolina | 1 /// Montana State University | 1 /// University of Memphis |
| 10 /// Clemson University | 1 /// Montreat College | 7 /// University of Miami |
| 1 /// Coastal Carolina University | 5 /// New York University | 4 /// University of Michigan |
| 3 /// College of Central Florida | 1 /// Northeastern University | 14 /// University of Mississippi |
| 9 /// College of Charleston | 3 /// Northwestern University | 1 /// University of Missouri |
| 1 /// College of the Holy Cross | 1 /// Nova Southeastern University | 1 /// University of Mount Union |
| 1 /// Colorado Mesa University | 1 /// NYU Shanghai | 2 /// University of North Carolina at Chapel Hill |
| 2 /// Columbia University | 1 /// Palm Beach Atlantic University | 28 /// University of North Florida |
| 2 /// Culinary Institute of America | 1 /// Palm Beach State College | 1 /// University of Notre Dame |
| 1 /// Dartmouth College | 1 /// Pellissippi State Community College | 1 /// University of Oregon |
| 4 /// Davidson College | 1 /// Penn State University (University Park) | 1 /// University of Pittsburgh |
| 1 /// Dickinson College | 1 /// Purdue University (Main Campus) | 1 /// University of San Francisco |
| 1 /// Drexel University | 1 /// Rice University | 10 /// University of South Carolina |
| 3 /// Duke University | 10 /// Rollins College | 5 /// University of South Florida |
| 1 /// East Stroudsburg University of Pennsylvania | 1 /// Saint Mary-of-the-Woods College | 1 /// University of Southern California |
| 1 /// Elmhurst University | 4 /// Samford University | 1 /// University of Southern Maine |
| 4 /// Elon University | 16 /// Santa Fe College | 2 /// University of Utah |
| 1 /// Embry-Riddle Aeronautical University (Daytona Beach) | 7 /// Sewanee: The University of the South | 5 /// University of Virginia |
| 4 /// Emory University | 1 /// Siena University | 1 /// University of Washington (Seattle Campus) |
| 4 /// Flagler College | 1 /// Smith College | 1 /// Utah State University |
| 2 /// Florida Agricultural and Mechanical University | 9 /// Southern Methodist University | 4 /// Valdosta State University |
| 16 /// Florida Atlantic University | 5 /// Stetson University | 3 /// Vanderbilt University |
| 5 /// Florida Gulf Coast University | 1 /// Stevenson University | 2 /// Virginia Polytechnic Institute and State University |
| 1 /// Florida Institute of Technology | 2 /// Syracuse University | 1 /// Wabash College |
| 2 /// Florida Polytechnic University | 14 /// Tallahassee State College | 10 /// Wake Forest University |
| 3 /// Florida Southern College | 1 /// Texas A&M University | 4 /// Washington and Lee University |
| 3 /// Florida State College at Jacksonville | 3 /// Texas Christian University | 2 /// Washington University in St. Louis |
| 64 /// Florida State University | 1 /// The American University of Paris | 2 /// Western Carolina University |
| 1 /// Full Sail University | 1 /// The College of Wooster | 2 /// William & Mary |
| 7 /// Furman University | 2 /// The New School | 2 /// Wofford College |
| 1 /// Garrett College | 2 /// The Ohio State University | 1 /// Yale University |
| 1 /// George Washington University | 9 /// The University of Alabama | 1 /// York College of Pennsylvania |
| 3 /// Georgetown University | 12 /// The University of Tampa | |
| | 4 /// The University of Tennessee (Knoxville) | |
| | 2 /// The University of Texas at Austin | |
| | 2 /// The University of West Florida | |
| | 1 /// Toccoa Falls College | |